

Health Targets

Health targets

- **Ten health targets, aligned with strategic priorities introduced for 2007/08.**
- **The targets bind both the Ministry and DHBs, as such we will be working together to achieve all 10.**
- **Each DHB was asked to include the ten health targets in their 2007/08 DAP.**

The 10 targets

Improving immunisation coverage

Improving oral health

Improving elective surgery

Reducing cancer waiting times

Reducing ambulatory sensitive admissions

Improving diabetes services

Improving mental health services

**Improve nutrition, increase physical activity,
reduce obesity**

Reduce the harm caused by tobacco

**Reduce the percentage of the health budget
spent on the Ministry of Health**

Mental Health Target:

“ 90-100% long term clients have relapse prevention plans”

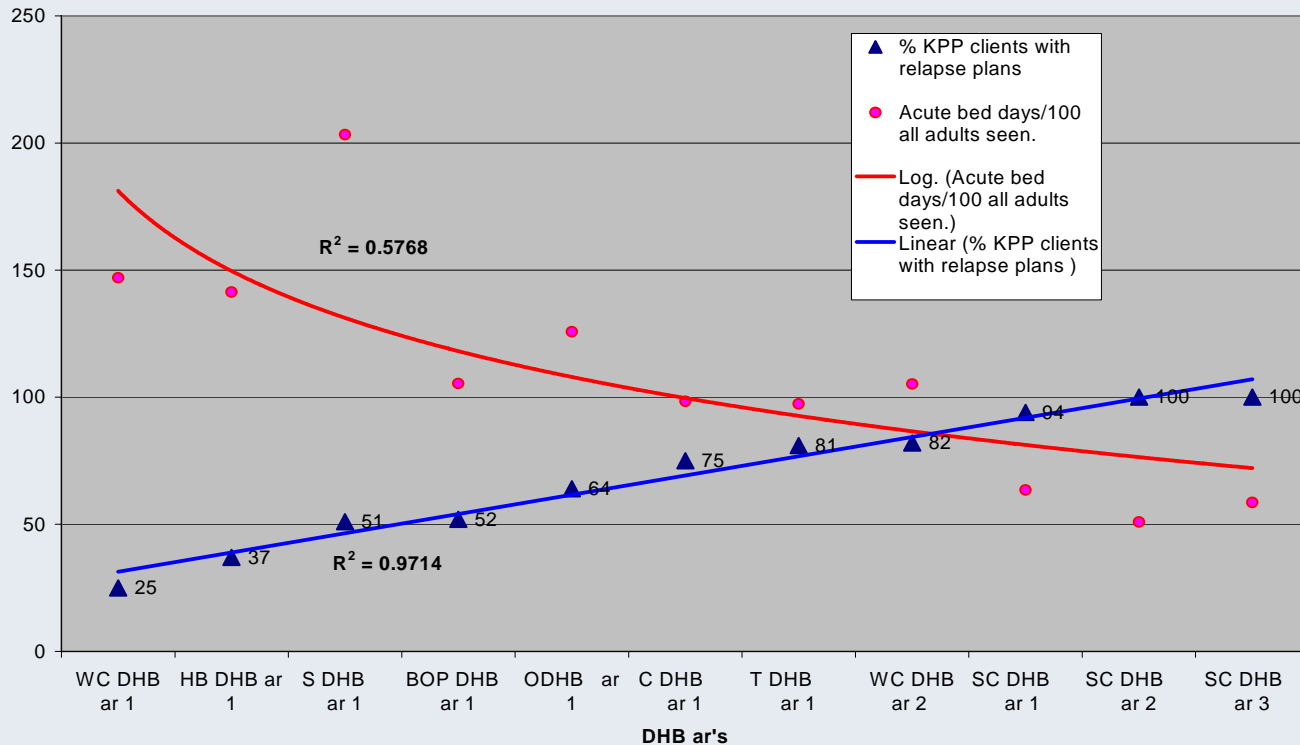
- **Why?**
 - identifies the early warning signs for the services user.
 - identifies what the service user can do for themselves and what the service will do to support the service user.
 - will be developed with involvement between the clinicians, service users and their significant others.
 - represents an agreement and ownership between parties.

Why this target?

- National Mental Health Sector Standard - criteria 16.4 (part of certification requirements)
- Discrete, understandable, it has some evidential support, it is measurable and reportable
- Literature e.g. Wolf, J., Parkman, S., Gawith, L. (2000). Professionals' performance in community mental health settings: A conceptual exploration. *Journal of Mental Health, 9(1), 63 - 75.*
- It is 'doable'; 93% in adult services in 8-KPP DHBs have plans
- In 10 DHBs there is no data of relapse management plans available

Correlation data from one DHB (KPP programme)

Percentage of KPP clients with relapse plans, cpw KPP client acute bed use per 100 adults seen.



The KPP DHB acute bed days are now 1,370 bed-days per 100,000 adults below the DHBs not involved in KPP.

What you need to know

- **Details will be provided by the DD-G (letter)**
- **Total count expected, not 'sample' data**
- **DHB MHS Champion reporting to DHB Champion**
- **'Long term' contexts?**
 - **C & Y**
 - **AOD**
 - **Adult**
- **Support from: MOH, Te Pou, Uniservices (via KPP)**
- **07/08 quarterly reporting**