



Rural Collaboration

Going from Good to Great

An examination of collegial and community collaboration in the Wairarapa.



7/17/2009



Demographic Information

Wairarapa District stats at 2006 census:
Number of children and young people
under 20 years of age

- Masterton District = 6,501
 - Carterton District = 1,959
 - South Wairarapa = 2,307
- 10.767



DHB Statistics

Area Size

5934.62 Square kilometers
= Sixth smallest

(1: Auckland; 2: Capital and Coast;
3: Hutt Valley; 4: Waitemata;
5: Counties Manakau;)

Perimeter

454.01 kilometers = third smallest

(1: Hutt Valley; 2: Capital and Coast;)



C&Y Blueprint Funding (per population) 2007/08

\$900.000 = Third smallest amount
(1: West Coast; 2: South Canterbury;)

Clients under 20 years old seen 2007/08

304 = 2.78% = seventh highest
(1: West Coast; 2: Nelson/Marlborough; 3: Tairāwhiti;
4: Taranaki; 5: Whanganui; 6: Otago)



MAORI AND PACIFIC PEOPLES

Maori Clients seen 2007/2008

- 75 = 2.84% = sixth highest

(1: Nelson/Marlborough; 2: Whanganui;
3: Tairāwhiti; 4: Taranaki; 5: Otago)

Pacific children and young people in the Wairarapa region (2006 census)

- 213

Wairarapa Schools

- 5 Secondary Schools = 1,183 pupils
- 1 Intermediate School = 400 pupils
- 22 Primary Schools = 3,258 pupils





3 Collaborative Projects

- CAMHS/Paediatric Project
- CAMHS/Puketiro Collaboration
- CAMHS Mobile Van



CAMHS/Paediatric Project

- Previous breakdown in relationships between Paeds/CAMHS.
- Lack of suitable and timely assessment of children with pervasive developmental disorders and global developmental delay etc.
- No Psychologist employed by Paediatric department.
- Uncertainty of numbers and needs of these clients.
- No extra funding available.

Project Development



- 6 month trial set up to identify needs
- In previous calendar year, 7 clients were referred from Paediatric department.
- 16 weeks into the trial, 20 clients have been referred
- Recent identified need for Paediatric Occupational therapist assessment to inform Psychological assessments-extra funding has been requested for 40 hours OT.



Possible Outcome? Virtual Reality Child Development Team

At the end of the trial (20/9/09) we will be able to identify:

- the specific needs of children and young people with complex developmental issues.
- Specific discipline requirements.
- Cost to provide the service.
- Where the service will “sit”.

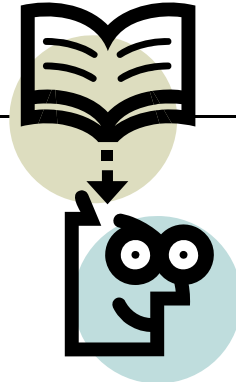


Puketiro/CAMHS Interface

- Paeds/CAMHS trial identified need for specific Psychometric testing equipment.
- CAMHS psychologists identified which tests were required
- Approached Puketiro Center for assistance (18-24 months wait list)



-
- Negotiation successful
 - Tests provided for one working week at a time
 - First week testing has occurred-
successful outcome





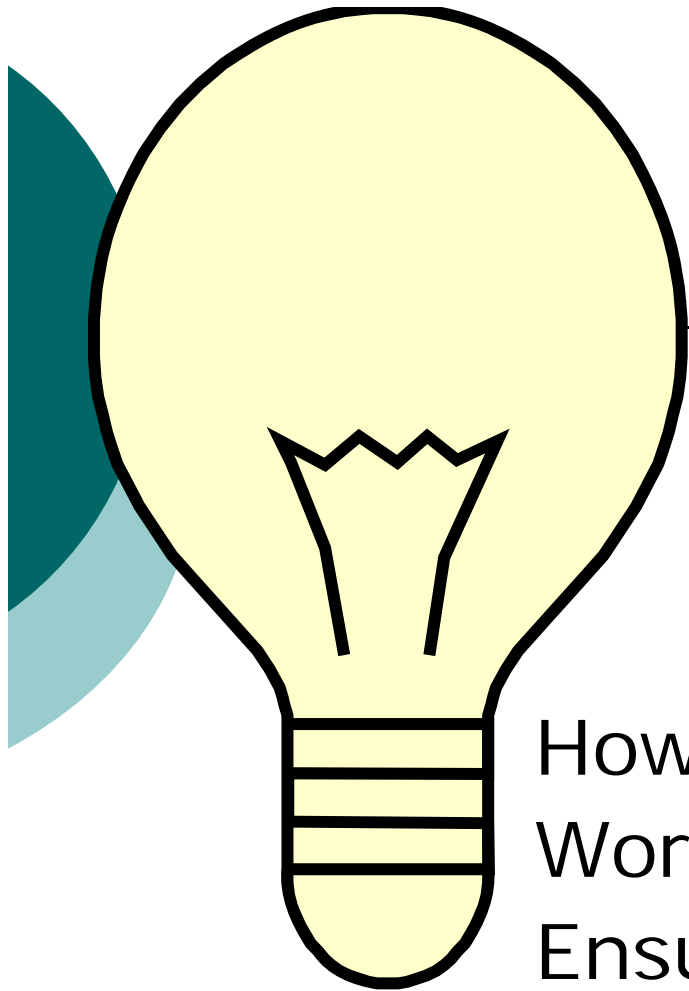
Mobile Van Project

- There are many small isolated settlements across the Wairarapa area, whose families have minimal access to vehicles and information regarding services available.
- The children and young people in these families are often the most vulnerable, with minimal or no pre school learning, poor school attendances and chaotic life situations.



Maori and Pacific peoples access

Maori and Pacific peoples are often the most disadvantaged in these communities, and it is imperative that we increase the access for these groups by delivering services to them, in their communities, in partnership with their support services.



What to do?

How can we be more accessible?
Work within current budget?
Ensure local community buy-in?
Increase Maori access?



Project Plan

- Access community funding to lease mobile van for one year
- Collaborate with:
 - Local iwi
 - Local Pacific groups
 - Local communities
 - Governmental agencies
 - Non-governmental agencies



Expected Outcomes

- Ensure geographically equitable service
- Decrease DNA's
- Increase Maori and pacific peoples access
- Forge community relationships
- Continue Wairarapa's ongoing ability to develop unique and innovative services
- Maximise the use of MOH funding

Where to from here?

Watch this space!!

