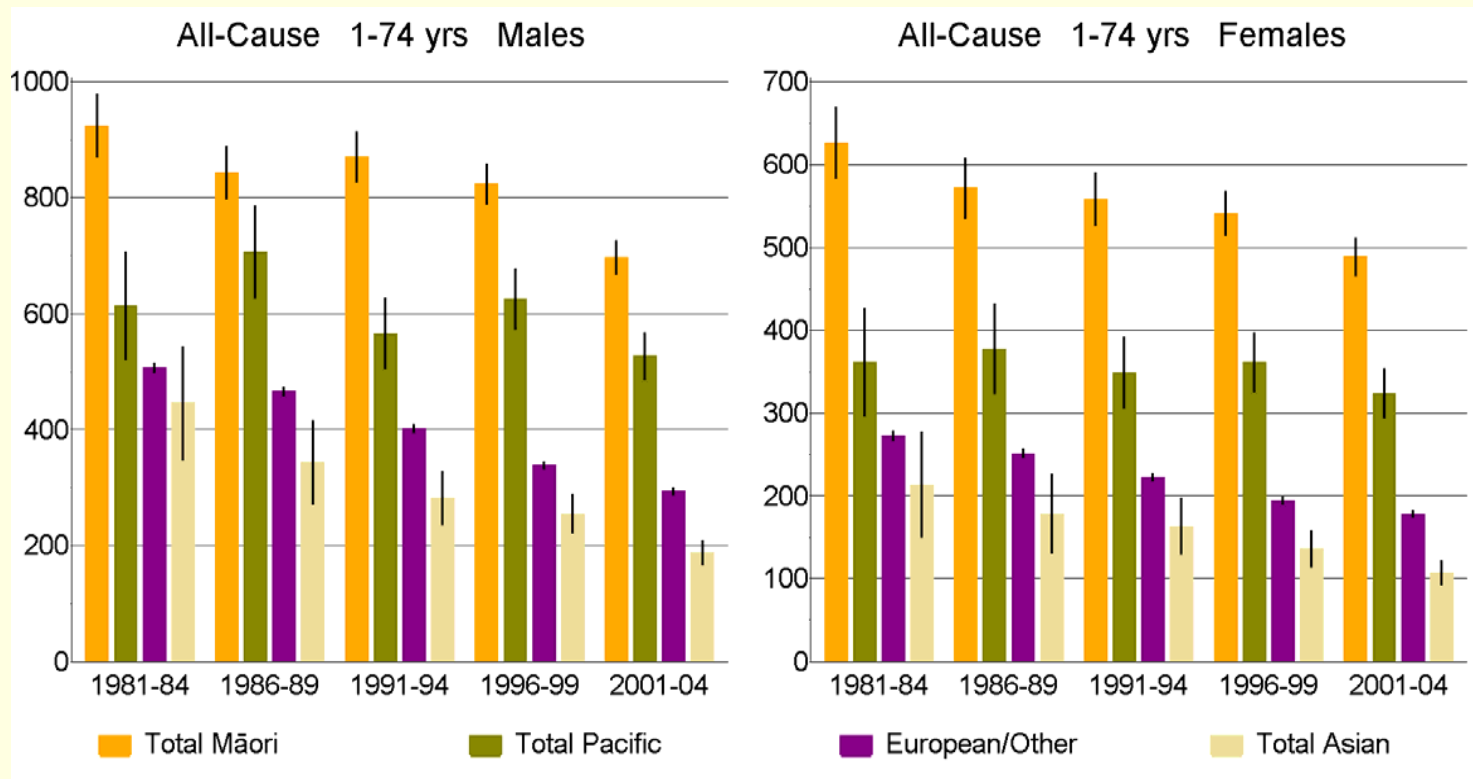




**SERAU**  
Programme of action for 2009/10 and  
2010/11

# Trends in ethnic all-cause mortality rates (NZCMS)

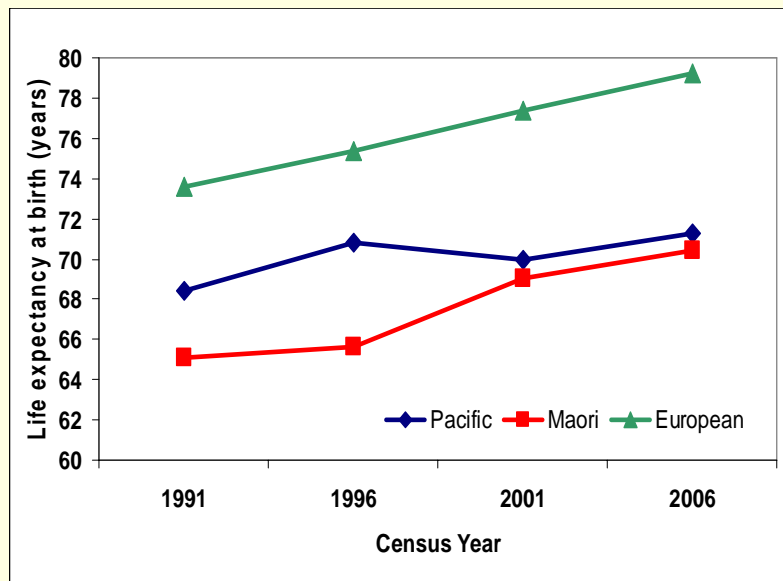


	Percentage decline 1981-84 to 2001-04			
	Māori	Pacific	Asian	European/Other
Males	25%	14%	58%	42%
Females	22%	10%	50%	35%

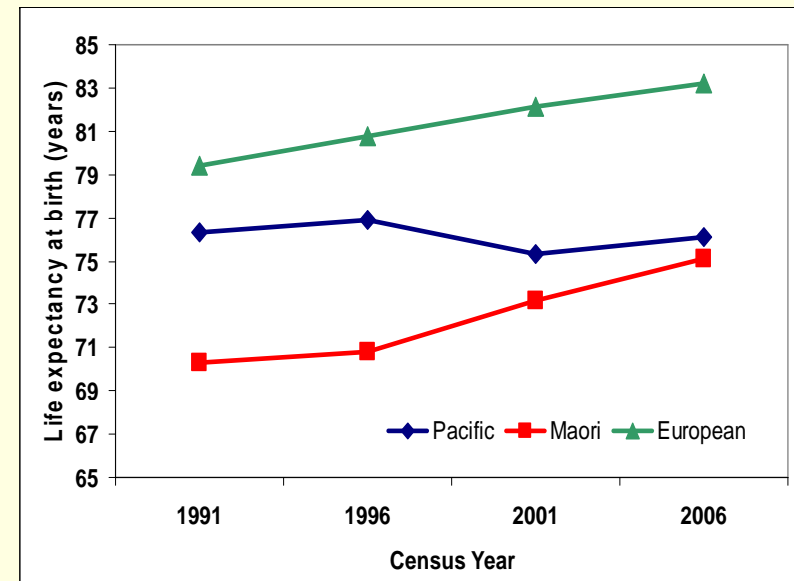


# Ethnic trends in LEO, 1991-2006

## Males

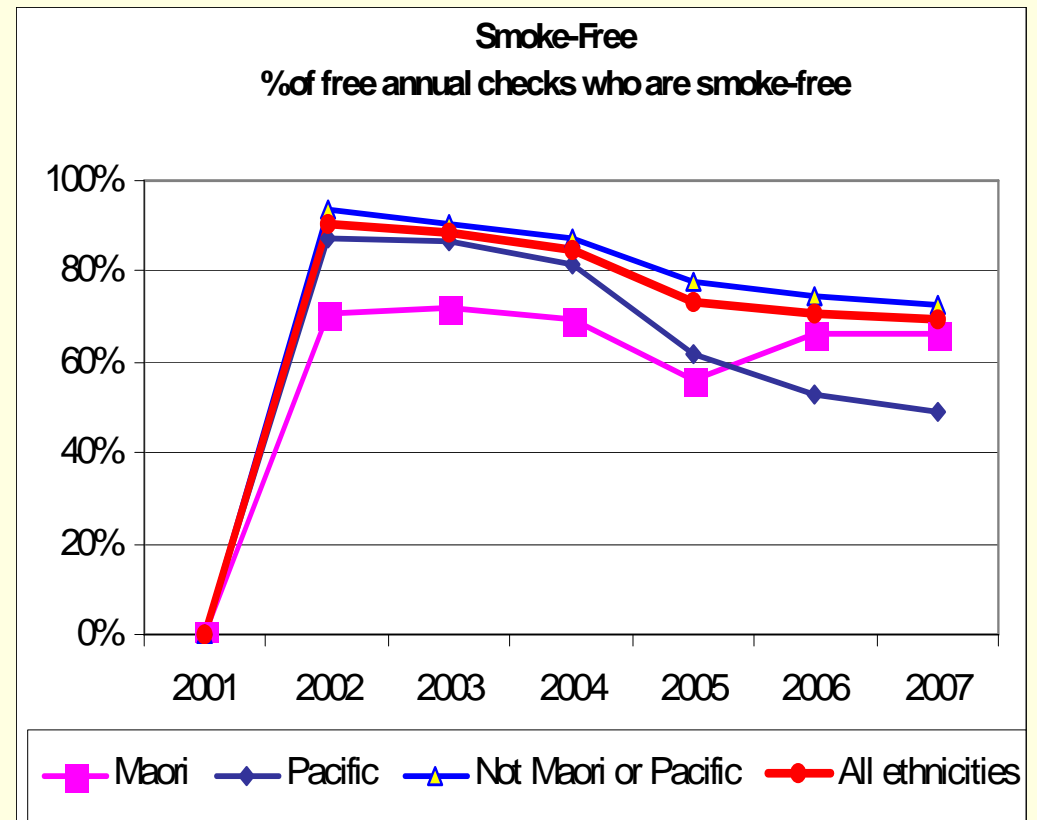


## Females



# Smoking

- 2006/07 NZHS:
  - 21% Pacific women smoke (Total Pacific rate 26%)
  - 25% Pacific women birth-giving age(15-44 years) smokers
- Youth2000 survey
  - Female Pacific youth smoking rate double Pacific youth male rate (8.5% vs 17%)



# Cancer

- Breast cancer commonest cancer for ALL NZ women
- Lung cancer 8.4% of Pacific female cancer (7% non Maori, non Pacific, **17% for Maori**)
- Beware rise in Pacific female youth smoking rates





**SERAU**  
Programme of action for 2009/10 and  
2010/11

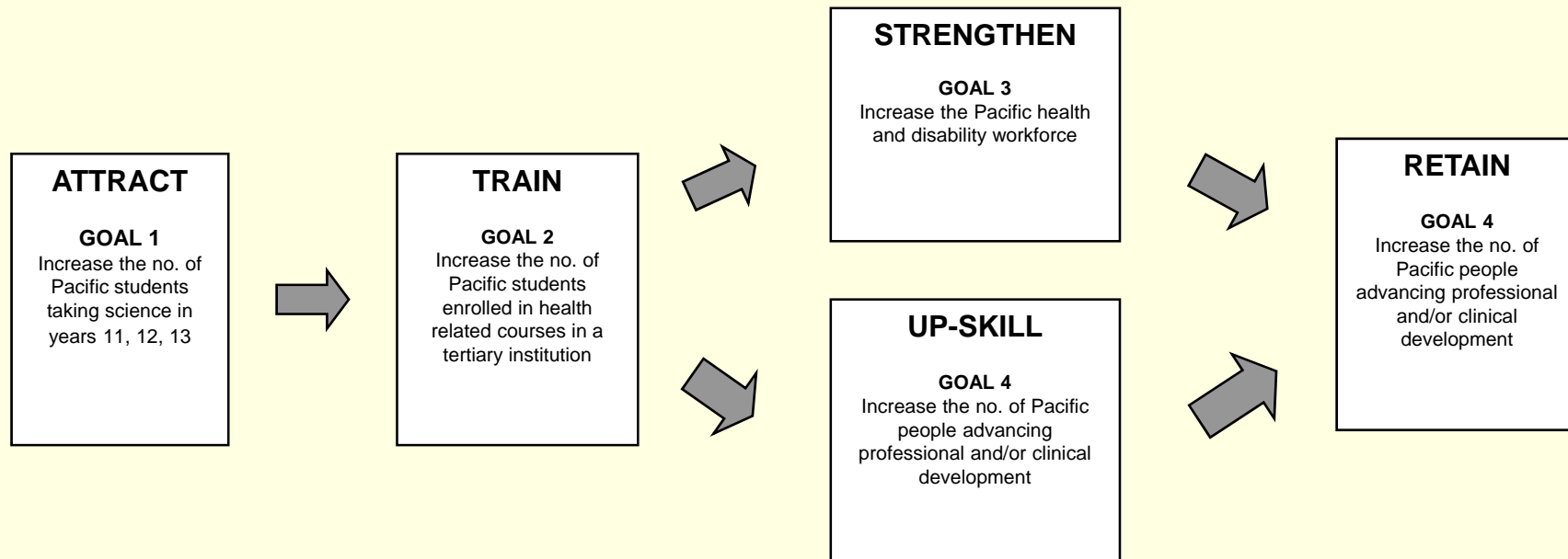
# Two workstreams

---

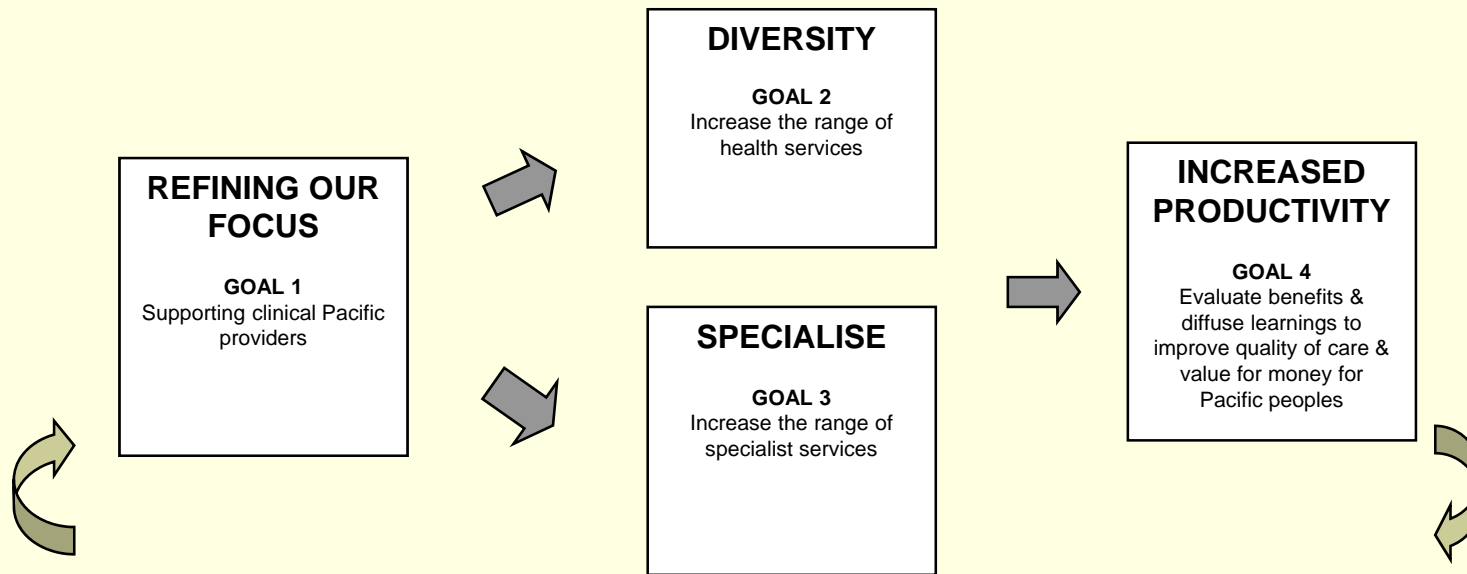
- Pacific health and disability workforce development
- Pacific providers delivering quality health services



# 1. Competent and qualified Pacific health and disability workforce



## 2. Pacific providers delivering quality health services



# Reduce Inequalities

---

- ‘...that almost every social problem common in developed societies – reduced life expectancy, child mortality, drugs, crime, homicide rates, mental illness and obesity – has a single root cause: **inequality.**’

Pickett and Wilkinson, 2009 – ‘The spirit level’



# Socio-economic factors and health

---

- *'Inequality in health outcomes is considerable.... men on low incomes have twice the risk of premature death than men on higher incomes.'*
- *'These health disparities are preventable and should not be considered acceptable'*

'The Health of people and communities' –  
PHAC report to the Minister of Health, 2004



---

***Vinaka vakalevu***

***Malo 'aupito***

***Fa'afetai lava***

***Meitaki maata***

***Faka'aue lahi***

***Fakafetai***

***Thank you***

